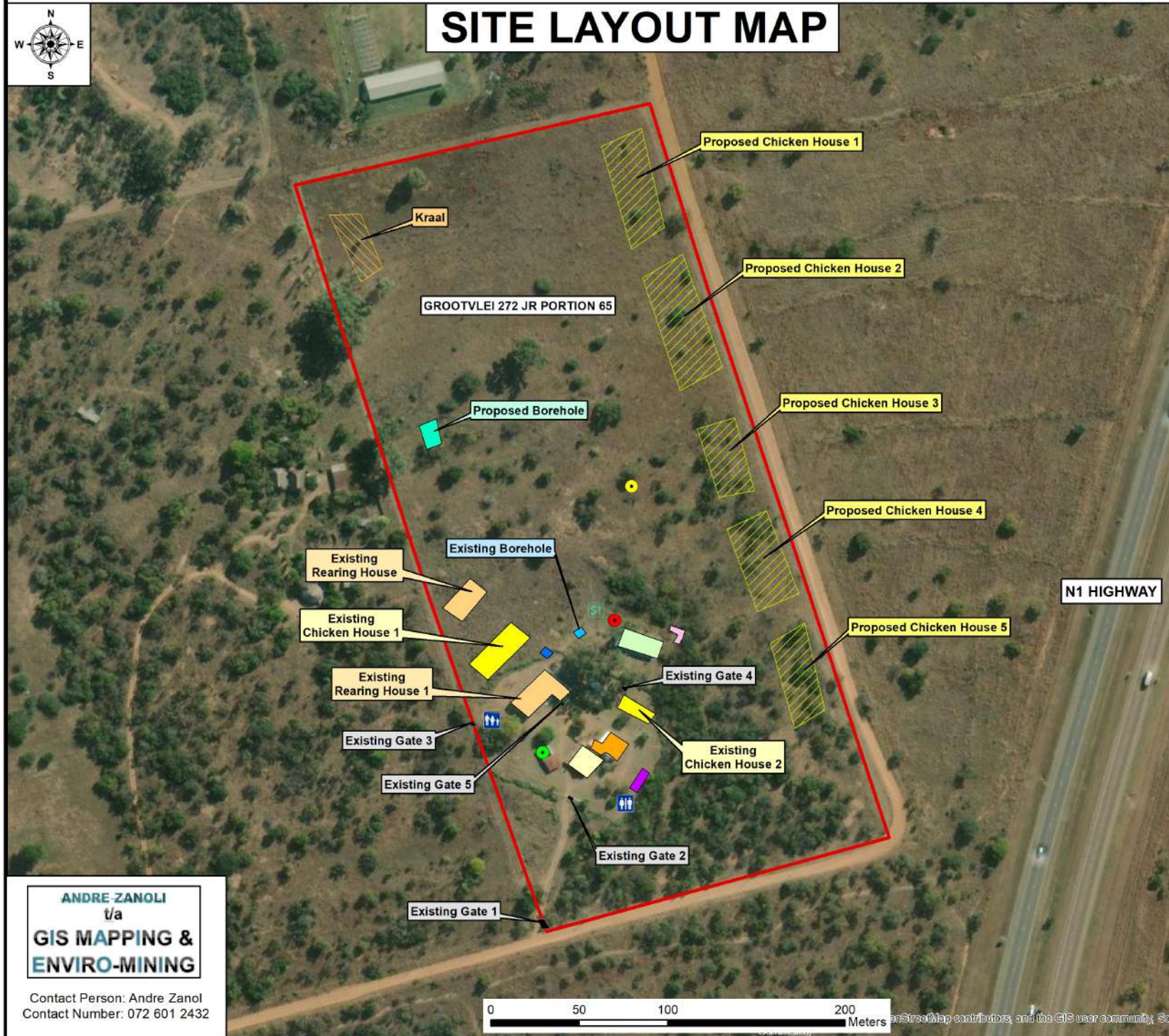


Poultry Development - City of Tshwane (Ward 49) - Farm Grootvlei 272 JR Portion 65 - Gauteng Province

SITE LAYOUT MAP



Legend

- Existing Gates
- Poultry Development
- Ablution Facility
- Drying Bed for Manure
- Sceptic Tank
- Existing Dog House
- Storeroom
- Staff Bathroom & Ablution Facility
- Existing Borehole Position
- Duck House Position
- Existing Chicken House
- Existing Domestic House
- Existing Pig House
- Existing Goat House
- Existing Office
- Existing Rearing House
- Kraal
- Proposed Borehole
- Rain Water Storage
- Proposed Chicken Houses

Date: 11 August 2025

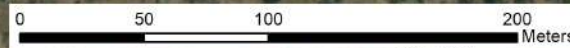
General Site Location
 25°30'36.74"S & 28°16'59.46"E
 SG Codes: T0JR0000000027200065



Cell No.: 079 614 8298
 Fax: 086 552 0171
 Email: shonie@scprojects.co.za
 Website: www.scprojects.co.za

ANDRE ZANOLI
 t/a
**GIS MAPPING &
 ENVIRO-MINING**

Contact Person: Andre Zanoli
 Contact Number: 072 601 2432



Map data © OpenStreetMap contributors, and the GIS user community, 2025